

PPT

Plastic Panel Turn Conveyor

Ultra Durable / FDA Approved / High Chemical Stability / Positive Drive
Positive Tracking / Low Friction / Seamless Maintenance Efforts

Design

Catch points eliminated with a closed-top surface allowing for seamless products transfers.

Belt Allowance

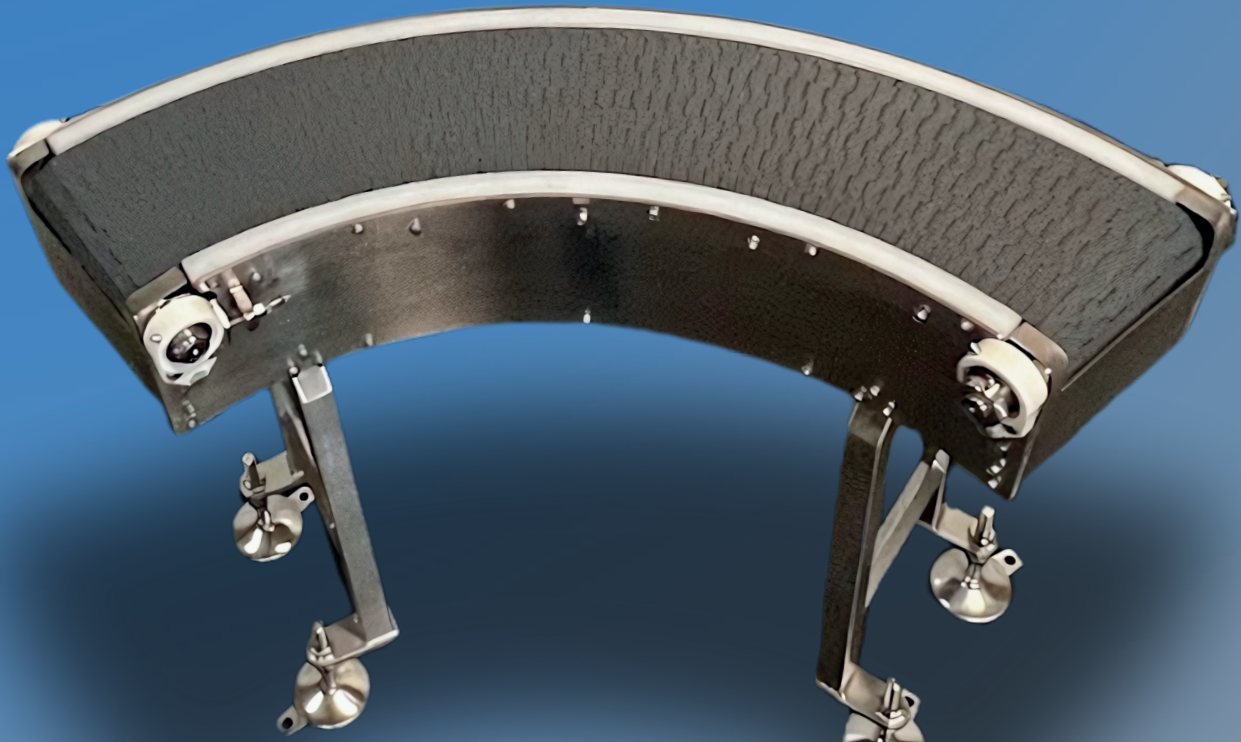
The inside radius is fixed at 23.62" (600mm) and remains unchanged regardless of width adjustments. The belt width is available in increments of 7.87" (200mm), ranging from 7.87" (200mm) to 55.11" (1400mm).

Solutions

- Available at 45°, 90°, and 180°
- Speeds up to 195 F.P.M.
- Stainless steel construction or a variety of painted finishes available

FDA Approved

Offered in a stainless steel washdown design paired with a chemical-resistant belt, that is capable of enduring temperatures up to 305°F, making it exceptionally beneficial for food industry applications.



Exceptionally Resistant

Designed to simultaneously endure long-term exposure to tough chemicals, resist relentless wear from friction and abrasion, and has the ability to withstand high levels of drop impact.

Maintenance

Streamline your operations effortlessly with swift and smooth part replacement solutions, lowering maintenance expenses and enhancing overall operational efficiency.